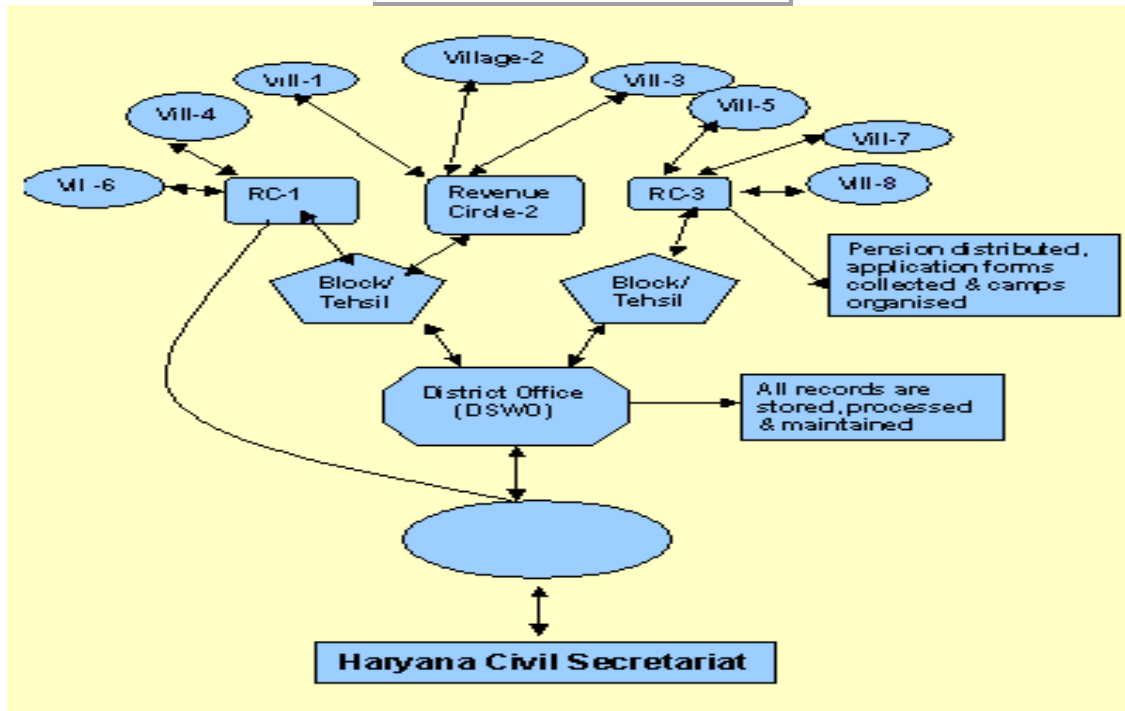


## Welfare Schemes

Presently, department is running the following major welfare schemes in the state. All schemes are implemented in the state through the district level offices of the department in association with the revenue and health officials. Directorate is monitoring all the schemes run in the state and takes care of its financial & physical matters along with the redressal of the grievances of the beneficiaries. It provides all the information as and when required by the Government.

A	<a href="#">PENSION</a>
B	<a href="#">HANDICAPPED WELFARE</a>
C	<a href="#">AGED WELFARE</a>
D	<a href="#">GRANTS IN AID</a>
E	<a href="#">DRUG ABUSE PREVENTION</a>
F	<a href="#">OTHER SCHEMES</a>
G	<a href="#">MINORITY WELFARE</a>



### Information Flow Diagram

While implementing welfare schemes in the state, the department goes through lots of procedures, activities and public dealing at state, district, tehsil, revenue circle and village levels.

To make the old people capable socially and economically, the Government is assisting old aged people, physically handicapped and widows and destitute women by giving them monthly pension @ Rs.750/- p.m. per person. Near about 13 lakhs records of pensioners covered under the old age, widow and handicapped pension schemes are processed, typed and monitored manually every month at Districts as well as Directorate level.

The eligible applicants are scrutinized, and selected for the benefits by District Level Committee formed under the Chairmanship of respective Deputy Commissioner. The application forms of selected beneficiaries are kept at District Social Welfare Officer office who in turn updates records and report to the department at State Level about the number of beneficiaries for the sanction of necessary budget for disbursement of pension on monthly basis.

Records of pension are sorted revenue circle wise and resorted village/ward wise because the circle revenue officer and patwari concerned disbursed the pension village/ward wise using the APR-cum-Feed back reports prepared by the officials of Distt. Social Welfare Officer every month. One copy of the APRs and disbursement report (summary of entire district) sent to Government/Directorate by the 10th of every month for information and sanction of budget for subsequent month.

Disbursement of pension involved several manual exercises every month at district level viz. preparation of APR-cum-Feed back report, disbursement report, addition of newly sanctioned cases, deletion of demised or non eligible cases, suspension or reinstate of pension of certain cases where enquiry is held etc.

## **I-Pension Schemes**

### **II-Handicapped Welfare**

### **III-Aged Welfare**

### **IV-Drug Abuse Prevention**

### **V-Grant-in-aid**

### **VI-National Social Assistance Programme**

#### **a) National Family Benefit Scheme**

#### **b) National Old Age Pension Scheme**

#### **c) National Widow Pension Scheme**

#### **d) National Handicapped Welfare Pension Scheme**

### **VII-Rajiv Gandhi Pariwar Bima Yojna (An Insurance Scheme)**

**pdfMachine**

**A pdf writer that produces quality PDF files with ease!**

Produce quality PDF files in seconds and preserve the integrity of your original documents. Compatible across nearly all Windows platforms, if you can print from a windows application you can use pdfMachine.

Get yours now!

## VIII-Minority Welfare: Scholarships to the students belonging to Minority Communities

**pdfMachine**

**A pdf writer that produces quality PDF files with ease!**

Produce quality PDF files in seconds and preserve the integrity of your original documents. Compatible across nearly all Windows platforms, if you can print from a windows application you can use pdfMachine.

Get yours now!

**pdfMachine**

**A pdf writer that produces quality PDF files with ease!**

Produce quality PDF files in seconds and preserve the integrity of your original documents. Compatible across nearly all Windows platforms, if you can print from a windows application you can use pdfMachine.

Get yours now!